

# GP 2010 Business Intelligence

# Agenda

- Introductions
  - Tami Johnson
  - Marc Holliday
- GP 2010 Business Intelligence Demo
- Business Intelligence Beyond GP
- Aspire Sessions
- Questions

# GP 2010 Business Intelligence Demo

# Drill Through to GP

- Master Record

- Customer

- Vendor

- Employee

- Account

- Checkbook

- Salesperson

- Item

- Project Contract

- Project

- Item BOM

- Asset

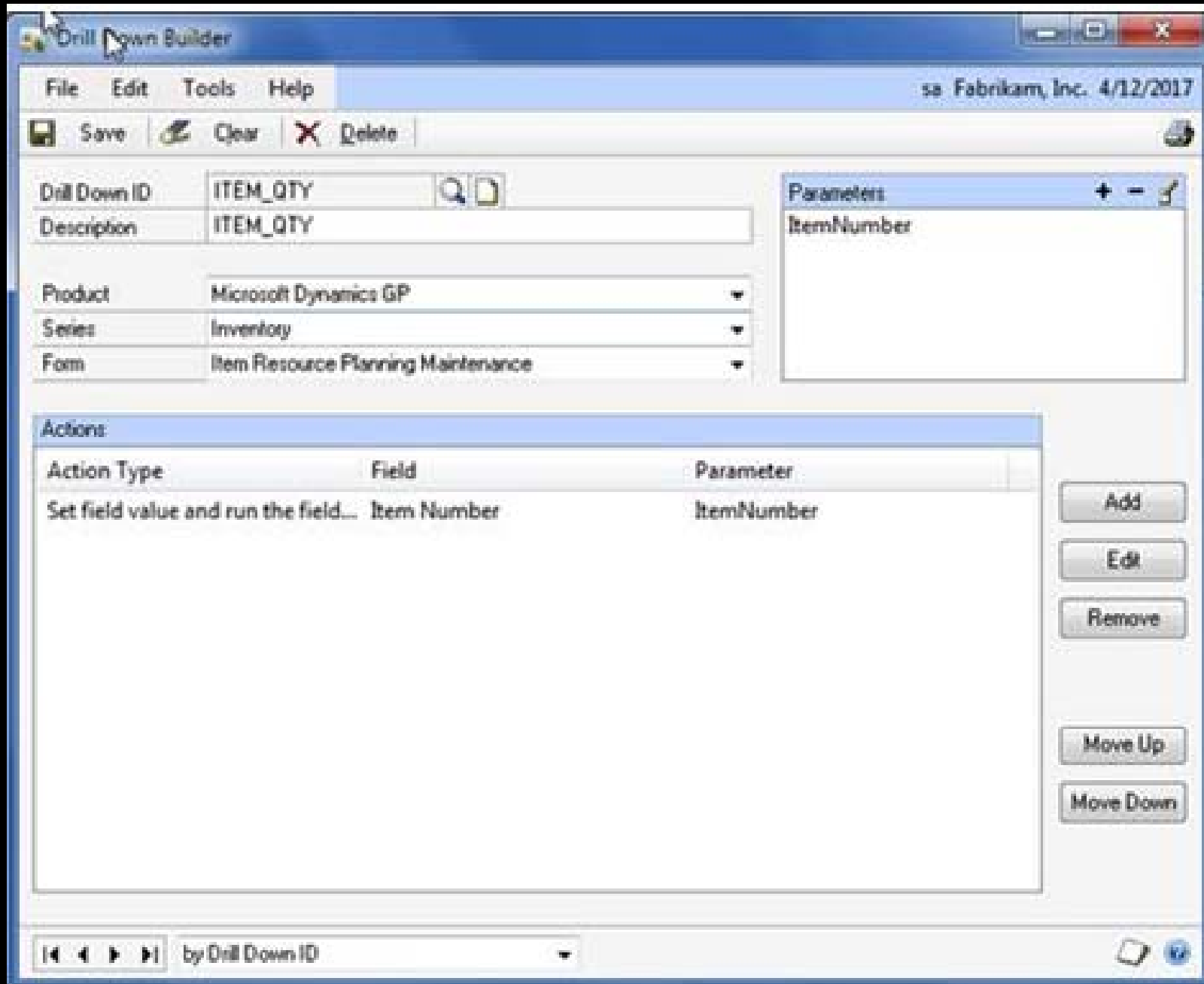
- Equipment  
Record

# Drill Through to GP

## ● Transactions

- Service Call
- RMA
- RTV
- Work Order
- Journal Entry
- Sales Order\*
- Receivables Transaction\*
- Payables Transaction\*
- Item Transaction\*
- Purchase Order\*
- Manufacturing Order\*

\* Edit or Inquiry window, depending on the state of the document



# Business Intelligence Beyond GP

# Common Issues

- Data comes from multiple sources
- Manual report compilation
- Difficult to measure performance

# BI Solutions

Data comes from multiple sources – *Data Mart or Data Warehouse*

Manual report compilation – *Data Mart or Data Warehouse, self-service BI*

Difficult to measure performance – *Dashboards, KPI's, Cubes*

# Misconceptions about BI

Takes too long to implement

More software is required

Too expensive

Only for large companies

# ocius BI Products & Services

Strategy and KPI Development

Business Process Analysis,  
Measurement and Validation

Data Warehouse Design,  
Development and  
Implementation

Data Mining with Excel 2007 or  
higher

Data Mart Design, Development  
and Implementation

Dashboard Design &  
Implementation

Scorecard Design &  
Implementation

Multi-dimensional Cube  
Development

- Performance Management
- Microsoft Dynamics GP Analysis  
Cubes Installation and  
Implementation
- Customization of Microsoft  
Dynamics GP and CRM Analysis  
Cubes
- Agile Project and Program  
Management
- Data Warehouse Optimization and  
Performance Tuning
- SharePoint Integration
- Data visualization

# Learn More About Business Intelligence at Aspire 2010

## Business Intelligence Track Sessions:

- An Introduction to Business Intelligence
- Data Mining with Excel 2007
- Building Dashboards with SRS and SharePoint
- Data Warehousing with SQL Server 2008

# aspire


Socius' Annual Conference

September 23

Early Bird Registration

Ends August 20th

[www.aspire-2010.com](http://www.aspire-2010.com)



**Aspire 2010**

### What's In Your Future?

Aspire, Socius' annual conference, is focused on bringing all of our staff, clients, and business partners together for one day of networking, learning, and discussing innovative ways to embrace the future as a person and a professional.

**WHAT THE FUTURE HOLDS FOR YOU AT ASPIRE:**

- An insightful keynote address
- Presentations by Socius, Zions, and Microsoft showcasing on the screens of the corporate and the solutions
- 44 Breakout Sessions on topics ranging from leadership and professional development to product-specific training
- Opportunities to connect with and learn from 120+ third-party software companies
- Networking opportunities with fellow professionals and members of the business community
- Opportunity to meet and connect with the entire Socius team

**EARLY BIRD ENDS AUGUST 20**  
September 23 | Columbus, Ohio  
[ [aspire-2010.com](http://aspire-2010.com) ]

**Don't Miss It REGISTER NOW!**



# Dive-In to GP 2010

## Financials - August 26

- 25 NEW financial features in GP 2010

## Payroll – September 9

- New tools in GP 2010 can transform your Human Resources and Payroll processes



All Dive-In to GP 2010 webinars are available for download at [www.socius1.com/divein](http://www.socius1.com/divein)

Questions?